

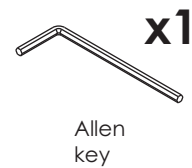
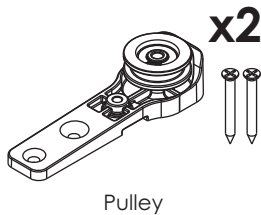
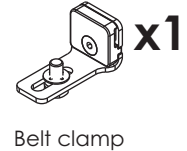
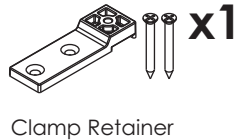
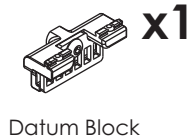
Brio[®] Telescopic Accessory Kit - 2 Panel

Brio Australia
P: +61 3 9300 9300
W: brio.com.au
E: auinfo@allegion.com

Brio NZ
P: +64 9 829 0550
W: brionz.com
E: nzinfo@allegion.com

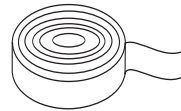
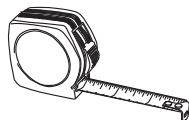
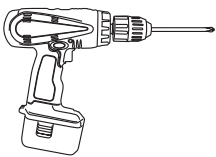
Brio UK
P: +44 191 2291224
W: briouk.com
E: brio.sales.uk@allegion.com

Kit components

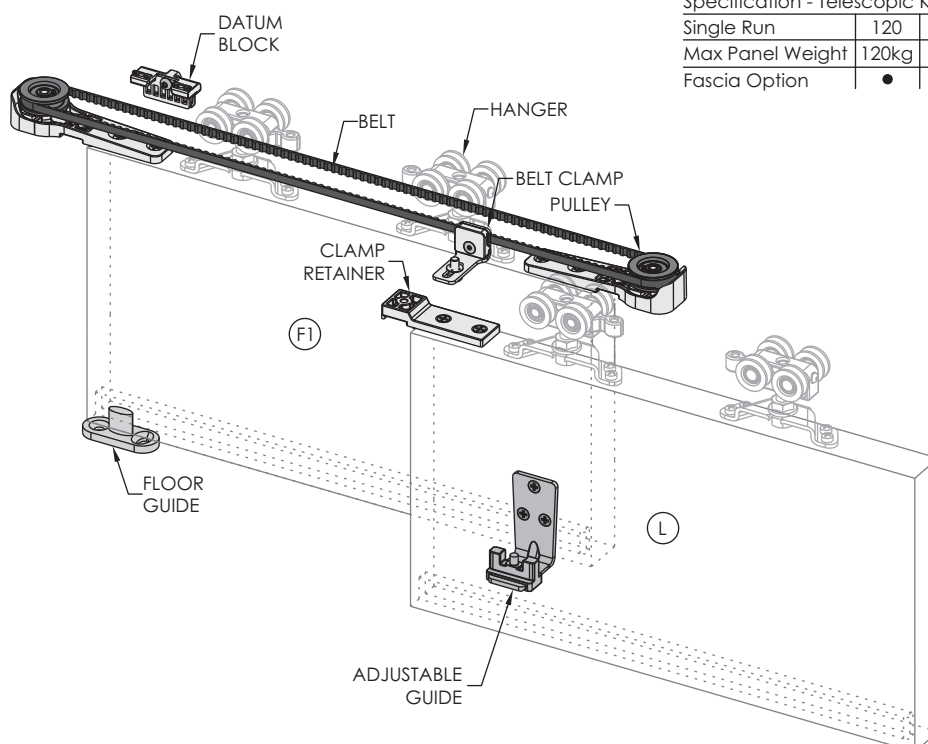


Note: Door stops available separately, dependent on the Single Run system used

Tools



Kit Overview



Specification - Telescopic Kit - 2 Panel

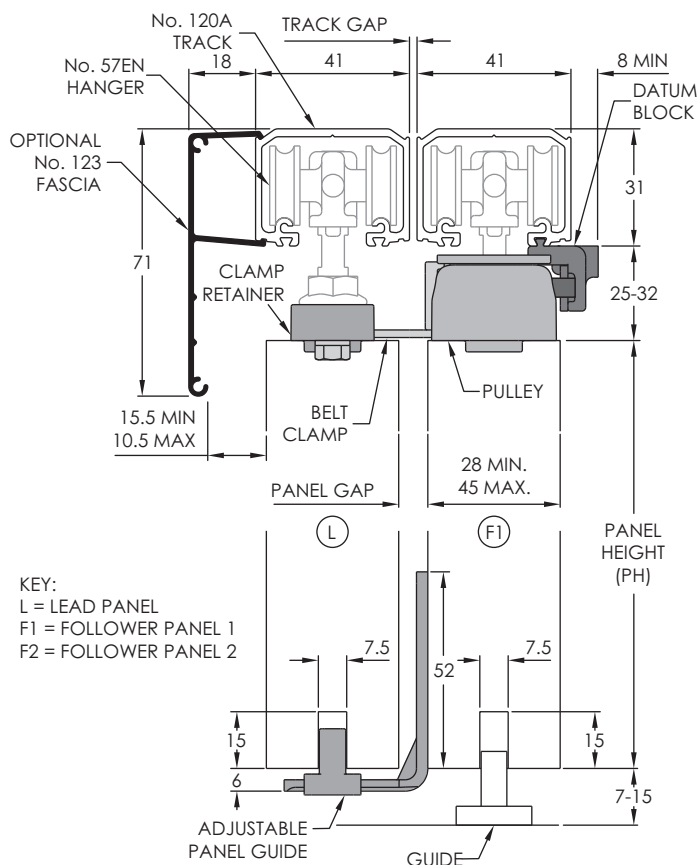
Single Run	120	180	350
Max Panel Weight	120kg	120kg	120kg
Fascia Option	•	•	•

KEY:
L = LEAD PANEL
F1 = FOLLOWER PANEL 1

System Overview

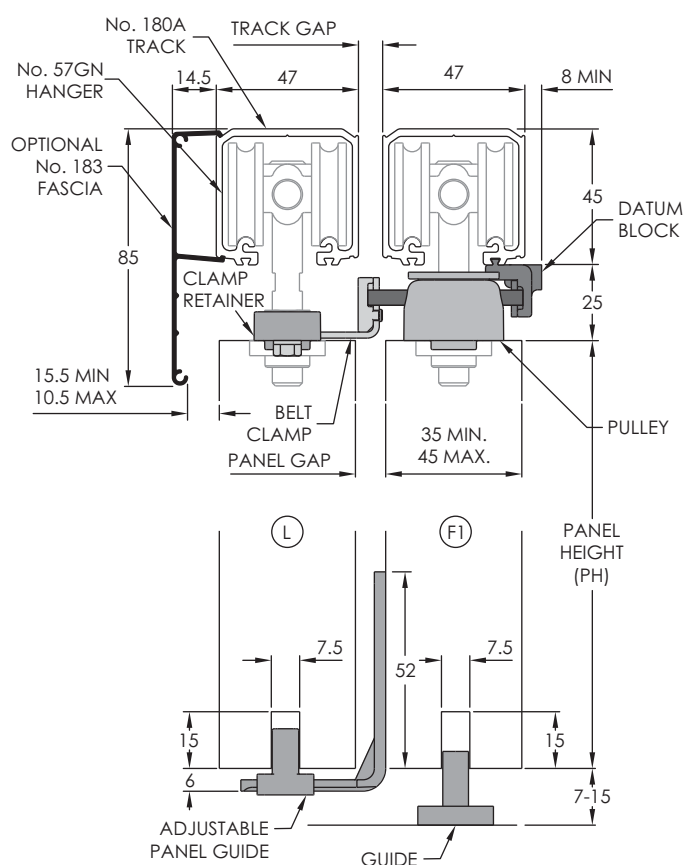
Single Run 120

PANEL THICKNESS	28	35	38	40	45
TRACK GAP	0	2	5	8	12
PANEL GAP	12.7	7.7	7.7	8.7	7.7



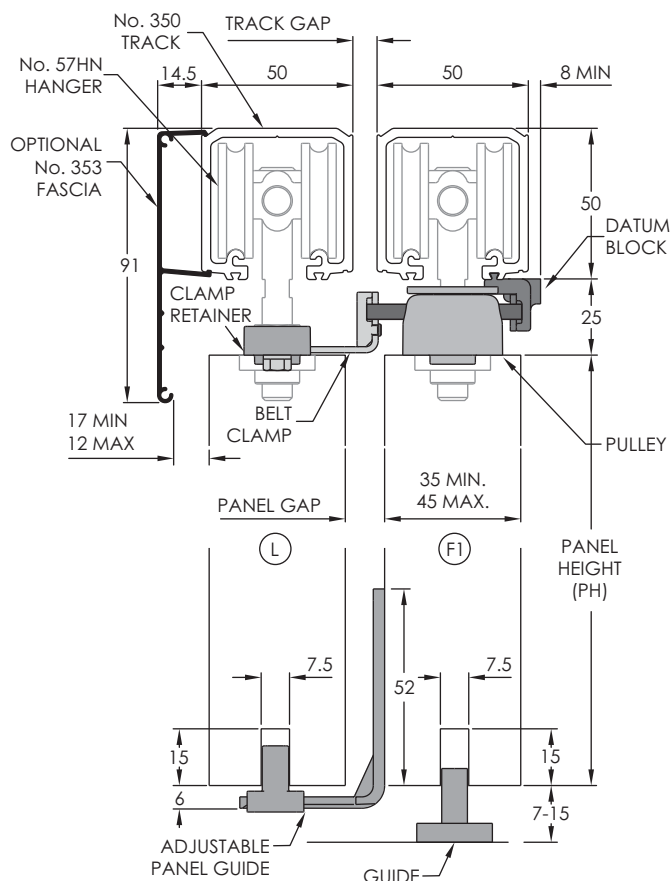
Single Run 180

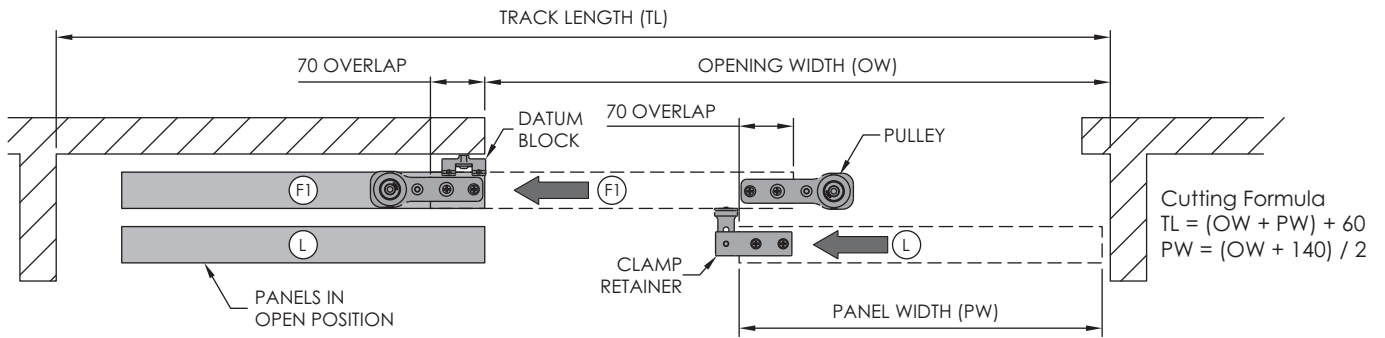
PANEL THICKNESS	35	38	40	45
TRACK GAP	0	0	1	7
PANEL GAP	12	9	8	8



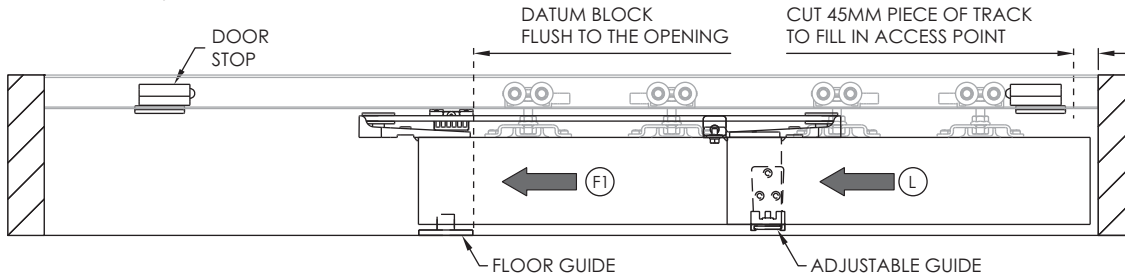
Single Run 350

PANEL THICKNESS	35	38	40	45
TRACK GAP	0	0	0	3
PANEL GAP	15	12	10	8

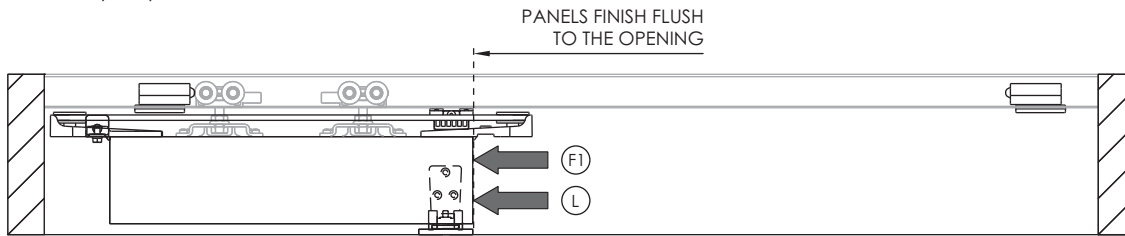




Panels in the closed position

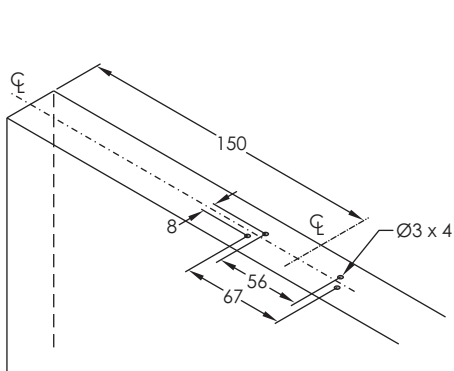


Panels in the open position

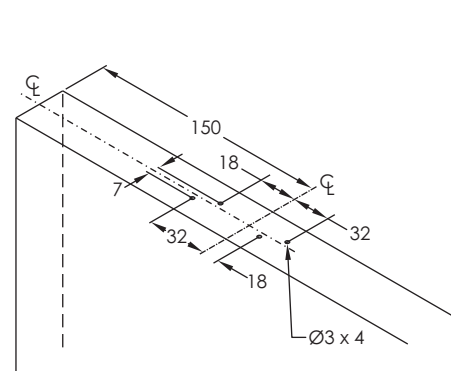


Panel Preparation

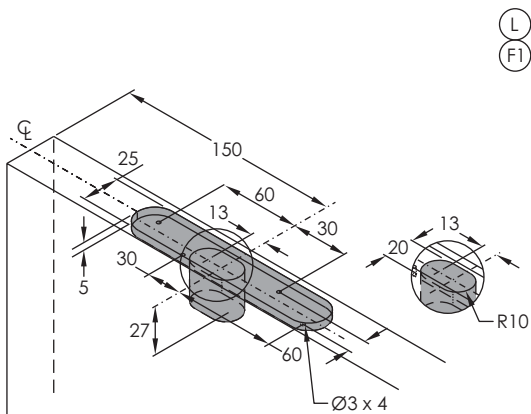
Hangers
57ENP
57DN



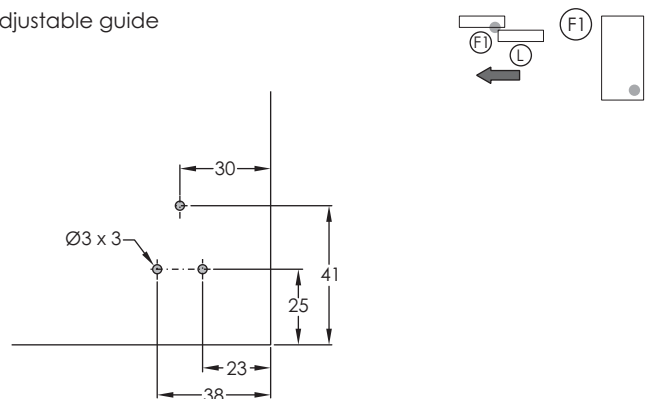
Hangers
57EN



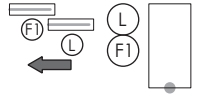
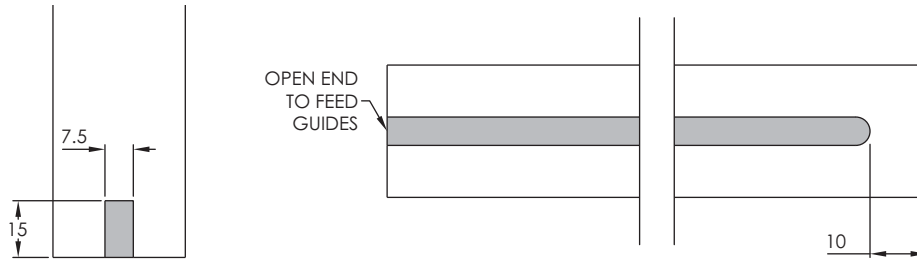
Hangers
57GN
57HN



Adjustable guide

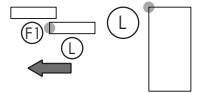
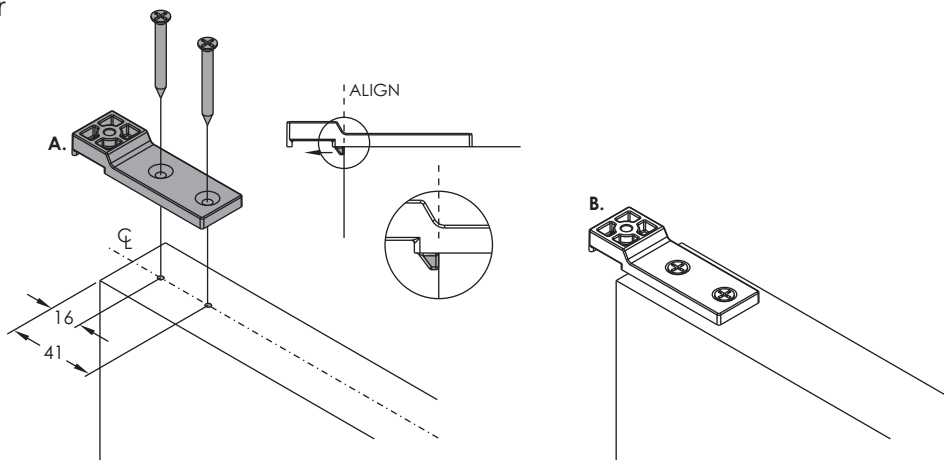


Guide groove

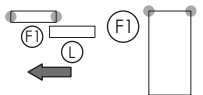
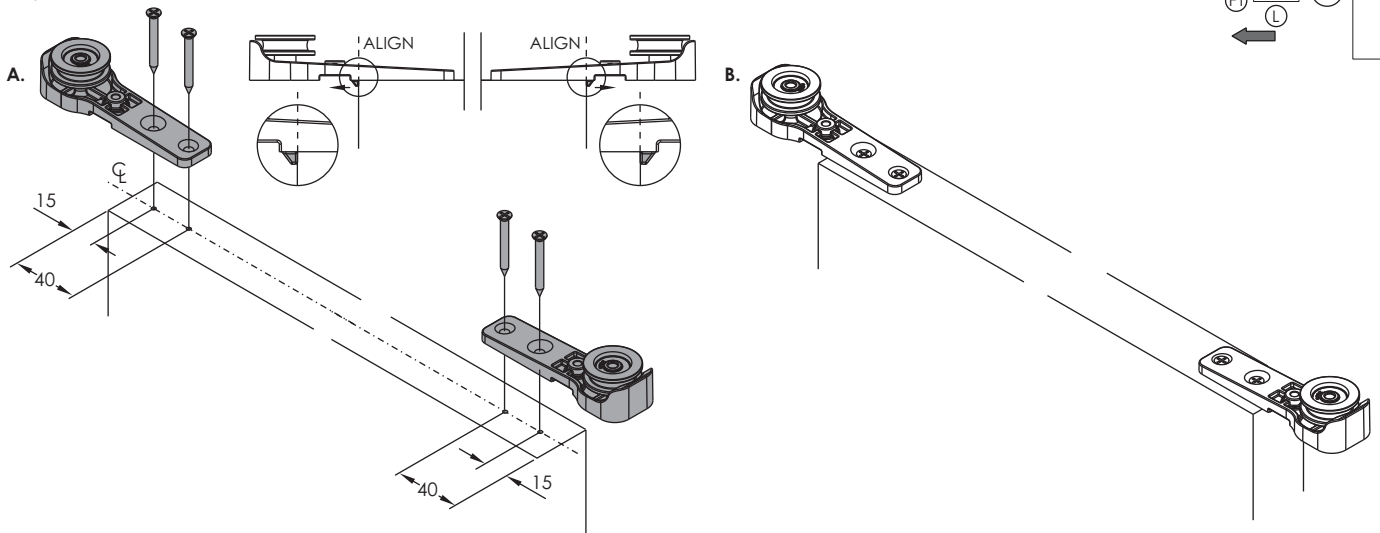


Telescopic Hardware Install

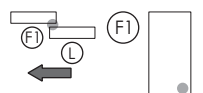
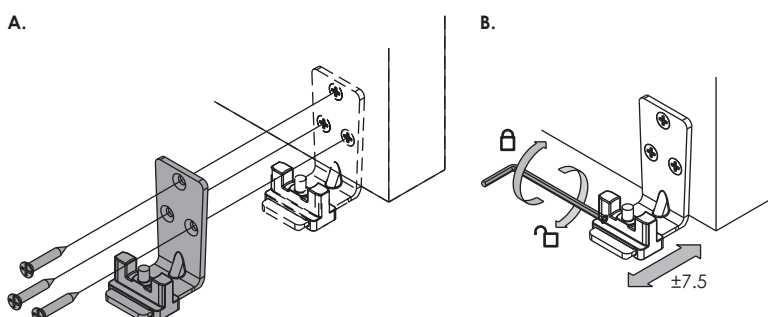
Clamp Retainer



Pulley bracket



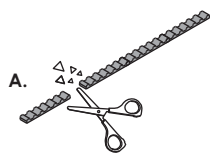
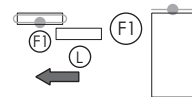
Adjustable Guide



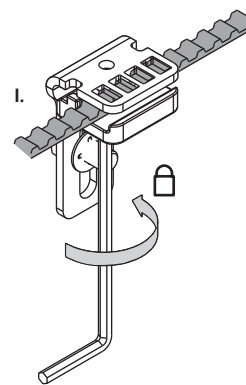
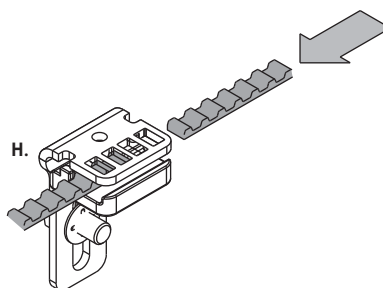
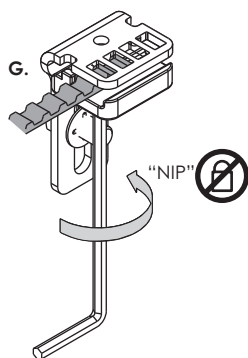
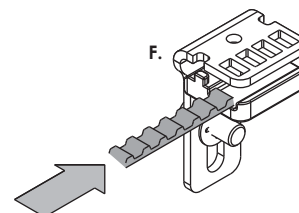
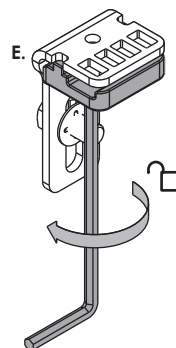
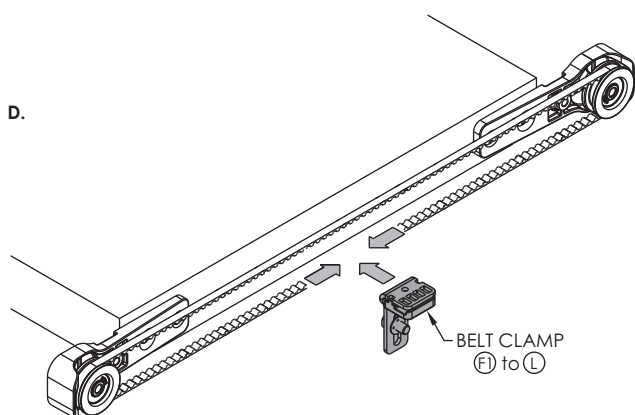
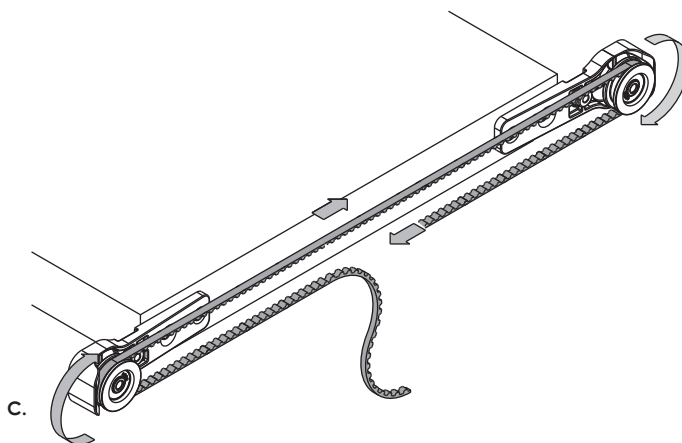
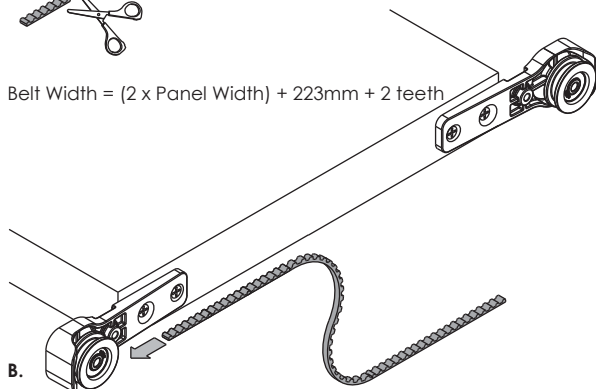
ADJUSTMENT DIMENSION (x)

	PANEL THICKNESS	28	35	38	40	45
SYSTEM USED	SINGLE RUN 120	20.2	18.7	20.2	22.2	23.7
	SINGLE RUN 180	-	23	25.5	21.5	24
	SINGLE RUN 350	-	26	24.5	23.5	23

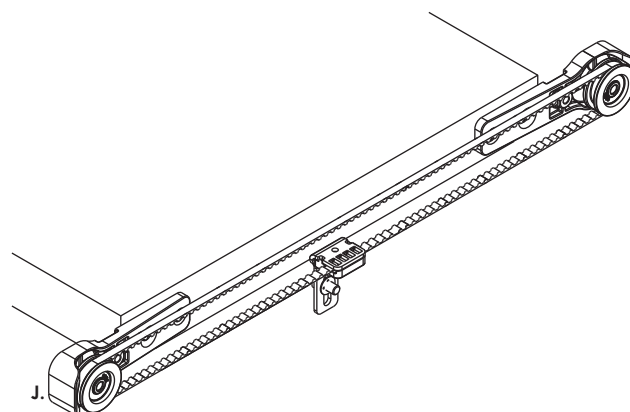
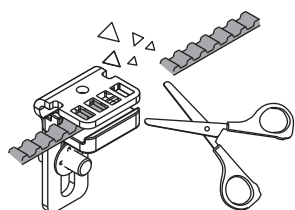
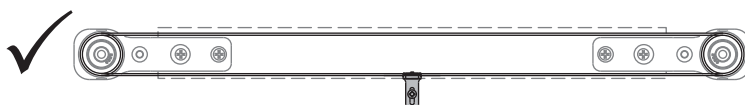
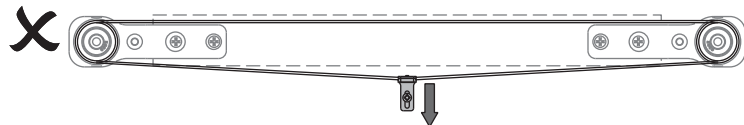
Belt and Belt Clamp



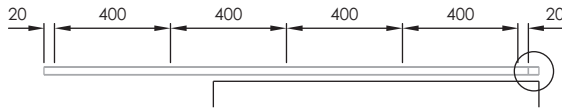
Belt Width = (2 x Panel Width) + 223mm + 2 teeth



G-1. If needed, remove additional teeth until slack is removed

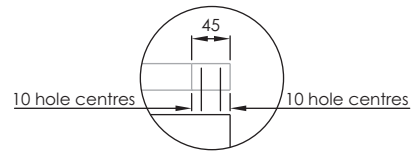


Track fixing centres



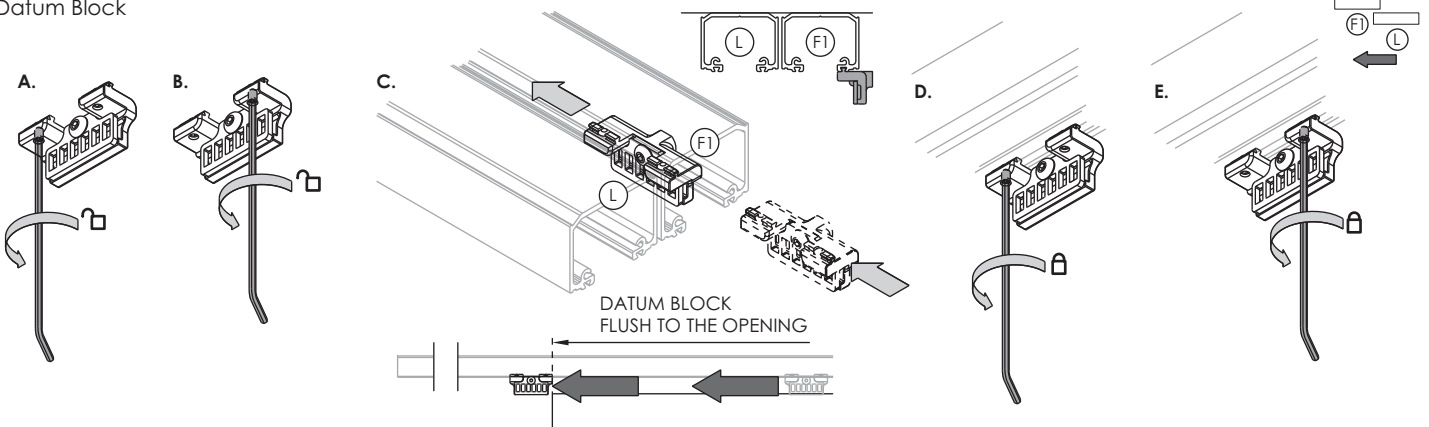
Refer to specific Single Run instructions for other track mounting options

Access track section

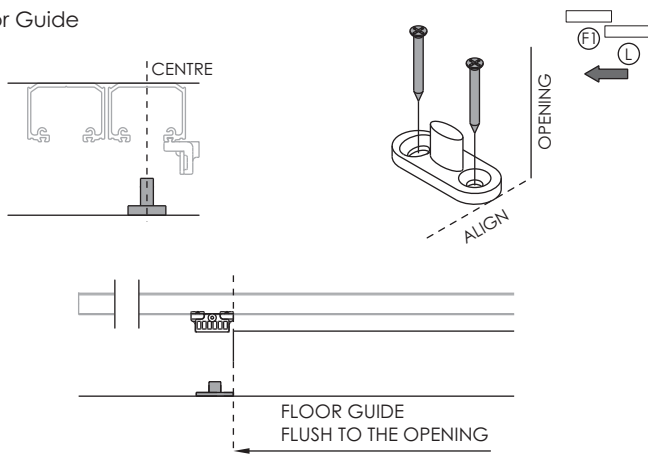


Fitted after system has been installed

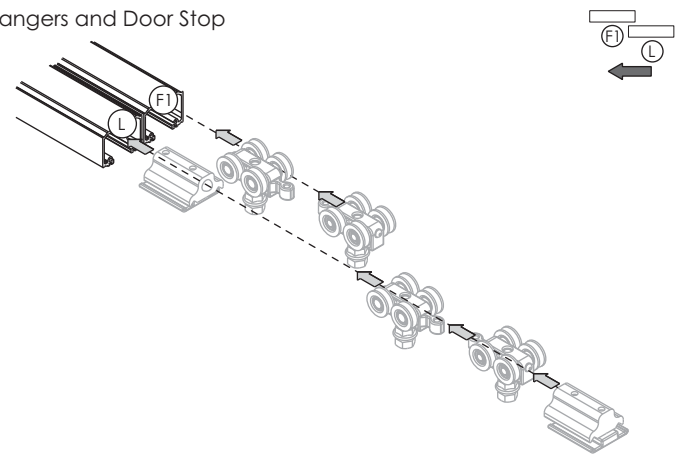
Datum Block



Floor Guide



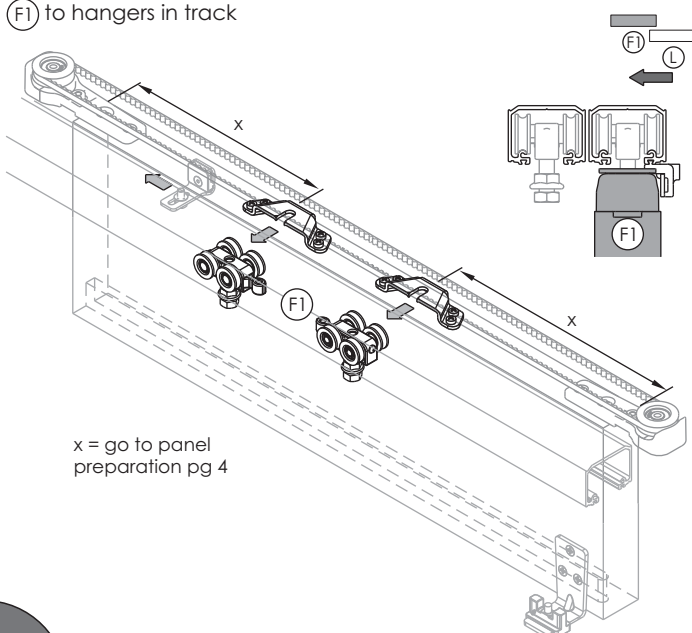
Hangers and Door Stop



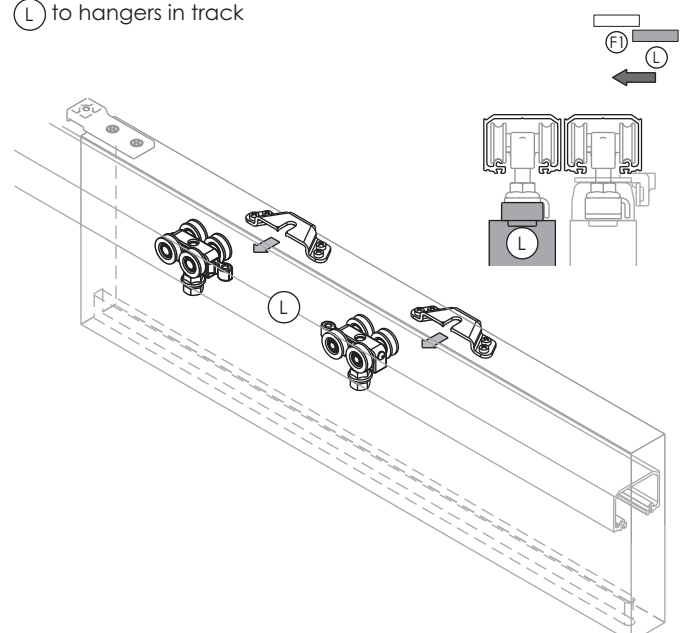
Panel Installation

Refer to specific Single Run installation instructions for mounting hangers correctly

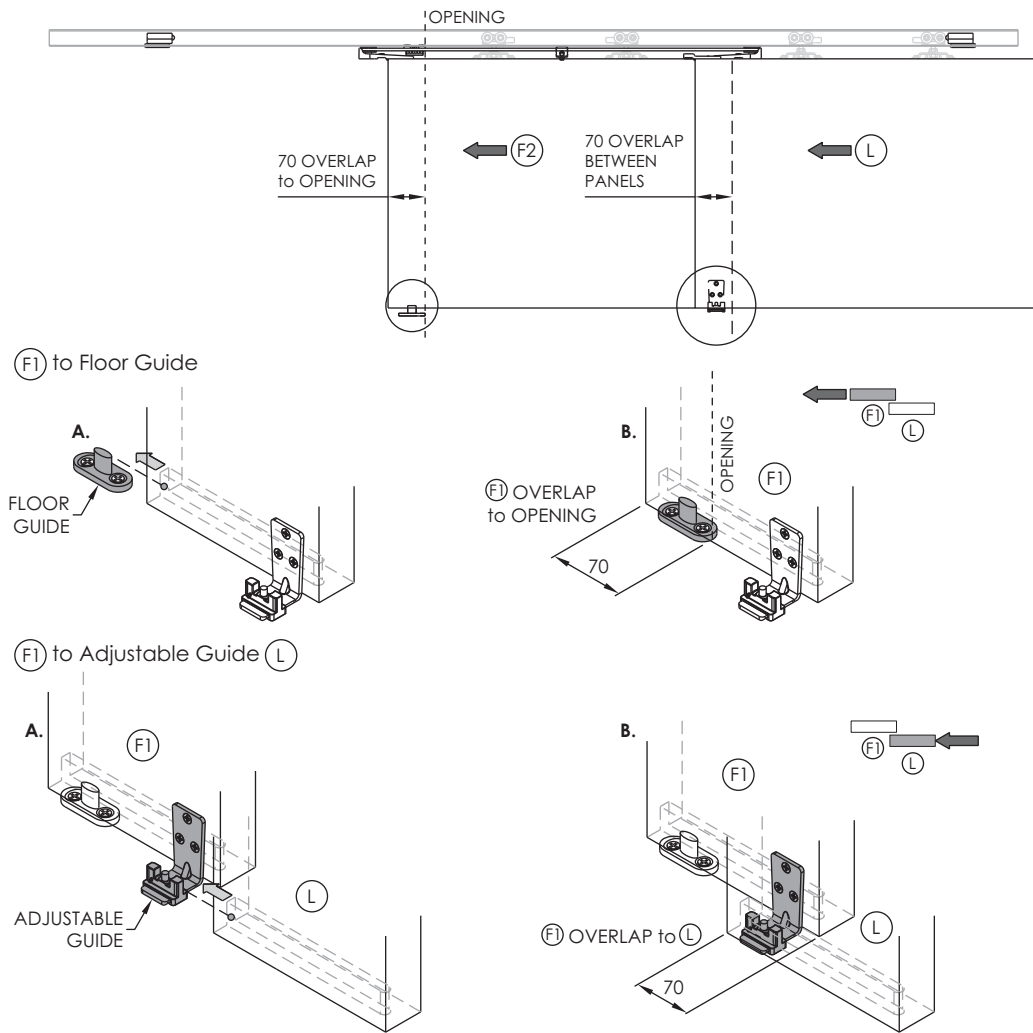
(F1) to hangers in track



(L) to hangers in track

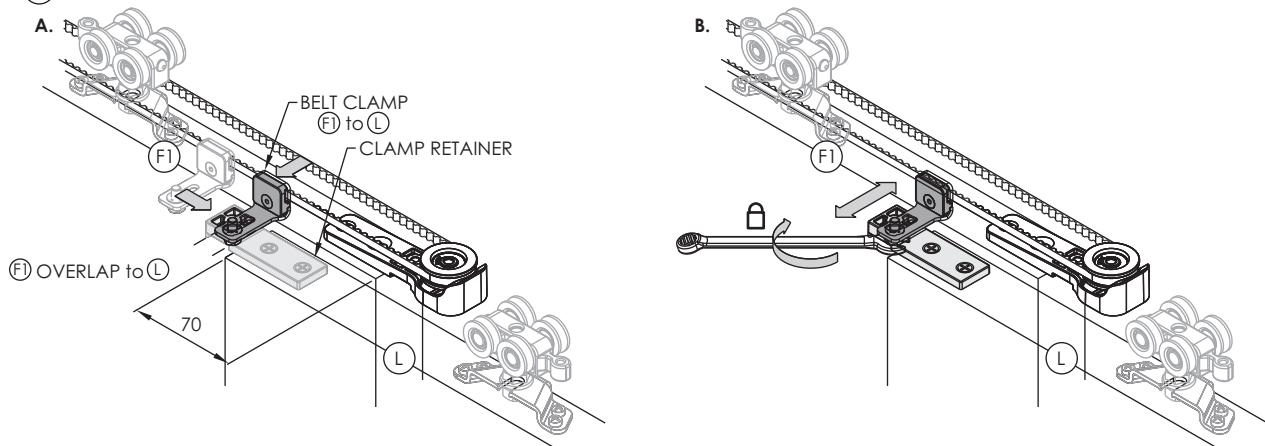


Panel Position

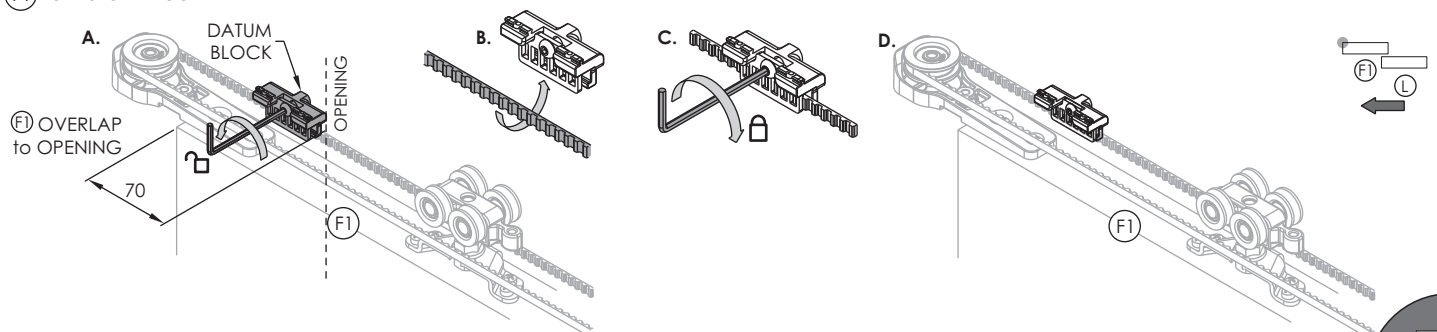


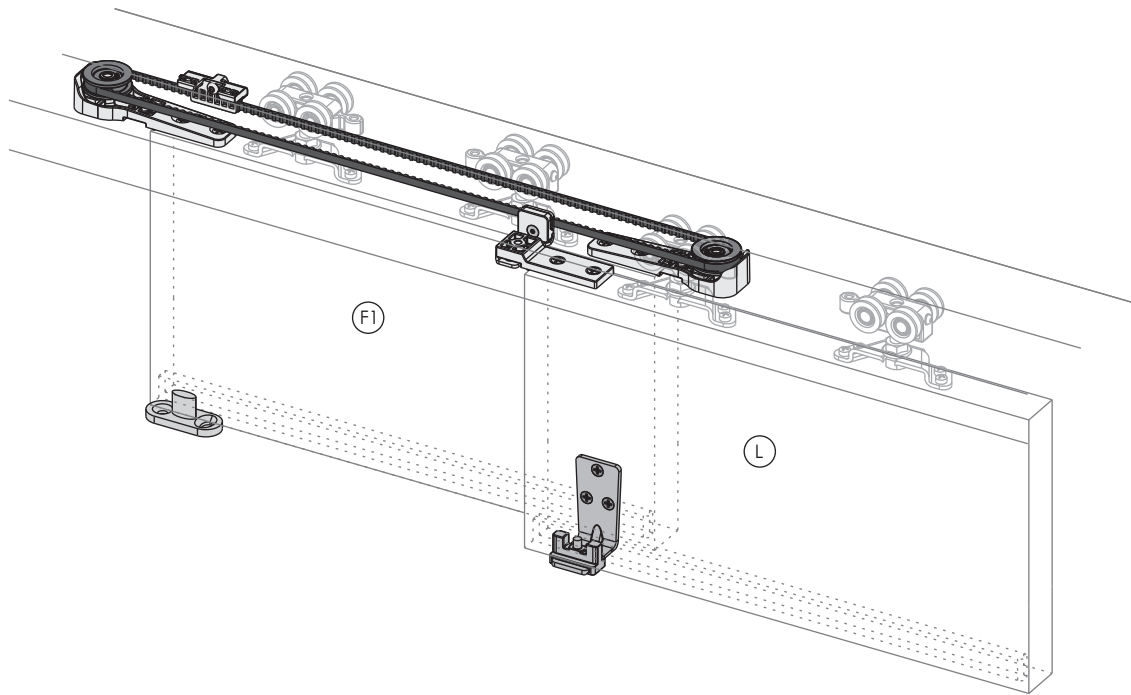
Connecting Panels

(L) to (F1)

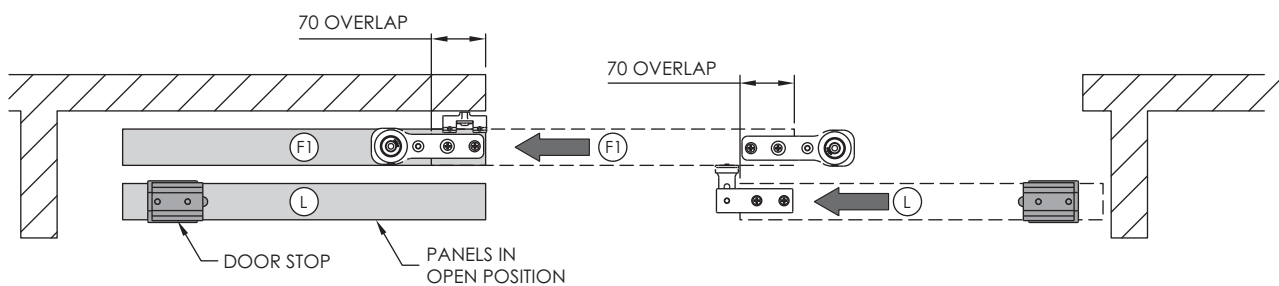


(F1) to Datum Block

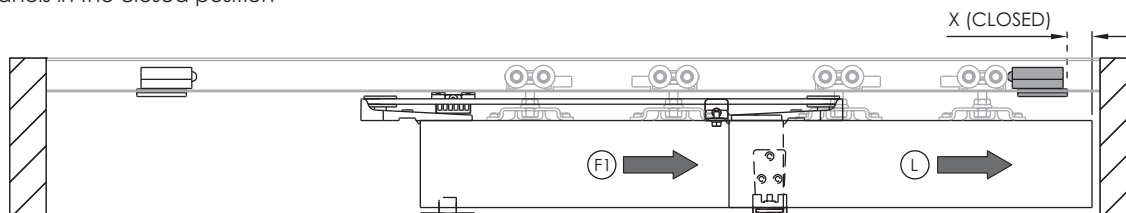




Door stops - Position and lock - **only needed for L panel**



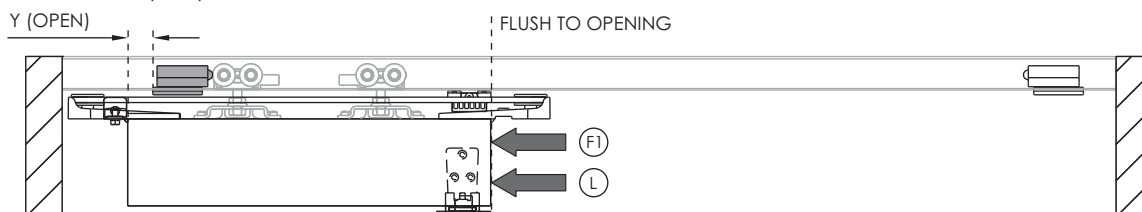
Panels in the closed position



Door Stop Position

Single Run	120	180	350
X (Open)	71	67.5	67.5

Panels in the open position



Door Stop Position

Single Run	120	180	350
Y (Closed)	71	67.5	67.5

Install access track

